

# Clinical Male Pelvic Trainer User Guide



Designed and manufactured by Limbs & Things Limited,  
Sussex Street, St. Philips, Bristol, BS2 0RA, UK.  
Telephone: +44 (0)117 311 0500 Fax: +44 (0)117 311 0501  
sales@limbsandthings.com www.limbsandthings.com

Issue 4, March 2007  
© 2007 Limbs & Things

For more skills training training products visit

[www.limbsandthings.com](http://www.limbsandthings.com)

# Clinical Male Pelvic Trainer

Part No: **60278**

Presents the key anatomical features of the male pelvic region including genitals, anus and pertinent internal organs, for teaching 'hands-on' examination.

## Skills

- Learning examination procedure
- Testicular examination
- Rectal examination of the prostate

## Features

- Gonads and vas deferens are present
- Realistic anus
- Can be used in two positions (supine and left lateral)
- Soft tissue elements are removable and replaceable:
  - penis, bladder & prostate
  - perineum, testicles & bowel
  - abdominal wall
- Skin surface is washable using soap and water

## Package supplied

- 1 **Perineum, Testicles & Bowel** Part No: **60373**
- 1 **Penis, Bladder & Prostate** Part No: **60381**
- 1 **Male Abdominal Wall** Part No: **60266**
- 1 **Silicone Oil (50ml)** Part No: **50180**
- 1 base

## Care of products made from latex foam rubber

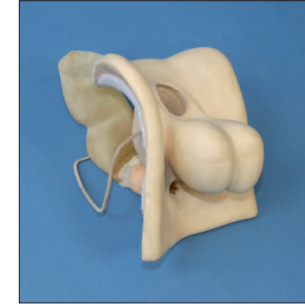
- Latex foam is a natural product; store away from strong light, preferably in the case provided, to reduce exposure to ozone. Ozone is generated by some electrical equipment including telephones and computers.
- Wash your hands before touching the foam. If the foam is handled after contact with certain metals, eg copper coins, it becomes yellow and discoloured.
- The foam may be washed effectively using any mild soap and rinsed afterwards. 'Vanish'™ soap is very effective. Do not immerse the model in water or allow water to run freely over the surface
- Do not ingest the product and practice normal hygiene after handling the product.

## Components



**Penis, Bladder & Prostate**

Part No: **60381**



**Perineum, Testicles & Bowel**

Part No: **60373**

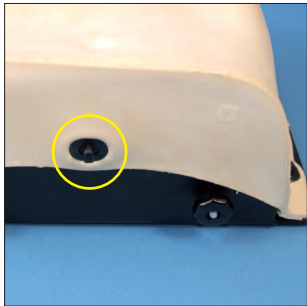
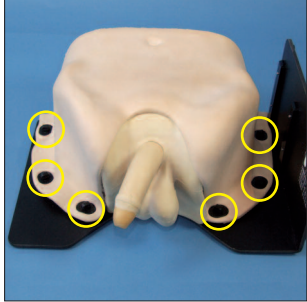


**Male Abdominal Wall**

Part No: **60266**

## Dismantling the Clinical Male Pelvic Trainer

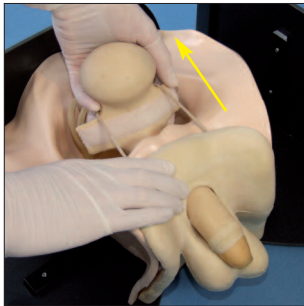
1



Remove the Abdominal Wall. The Wall is held in place by 7 black turn clips: 6 around the edges ...

... and 1 holding the back of the Wall in position.

2



Gently peel the Penis, Bladder & Prostate away from inside the front of the pelvic shell.

Feed the penis through the opening in the Perineum. Gently pull the Penis, Bladder & Prostate back and out through the pelvic bowl.

3

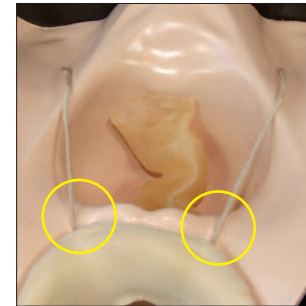


The vas deferens are not permanently fixed in position and should be drawn out from the prostate.

Gently peel the Perineum away from the front of the pelvic shell and remove it.

## Reassembling the Clinical Male Pelvic Trainer

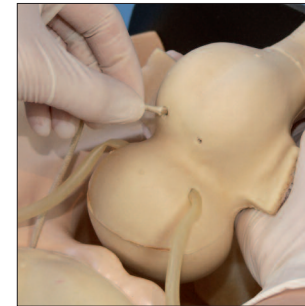
1



Feed the bowel through the perineal opening and align the perineum with the Velcro™ on front of the pelvic shell.

Make sure that the cords representing the vas deferens are lying over the top of the pelvic ridge.

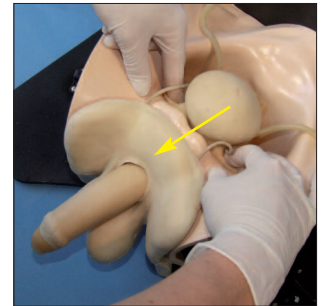
2



Hold the Penis in one hand with the prostate facing upwards.

Insert the ends of the cords, which represent the vas deferens, into the small holes on the underside of the prostate.

3

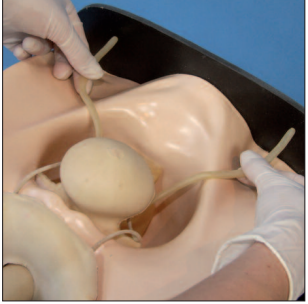


Rotate the Penis assembly towards the perineal opening.

Feed the penis through the perineal opening and push the Penis assembly into position. Secure it in place with the Velcro™ inside the front of the pelvic shell.

## Notes

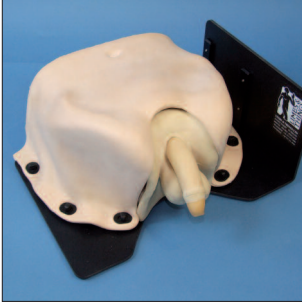
4



Drape the ureters over the back of the pelvic shell.

Place the Abdominal Wall over the shell and reattach it using the 7 black turn clips.

5



The Trainer is now ready to use