



## Hysteroscopic Resection Trainer

Part No: **60324** ⚡

Having acquired the pertinent skills on the Hysteroscopic Diagnostic Trainer, treatment on the pathologies identified can then be performed using the Hysteroscopic Resection Trainer.

### Skills

- Instrument handling
- Fluid management
- Identification and recognition of fibroids, polyps and a septum under fluid management
- Resection skills within an anatomical structure

### Features

- The proprietary material provides a realistic image through the hysteroscope and response with resecting instruments
- Quick and easy to assemble
- Minimal cleaning and maintenance required
- Incorporates a simple but effective irrigation and drainage system to contain operative liquids
- A clamp stabilises the uterus whilst providing adequate mobility when using the hysteroscope

### Package supplied

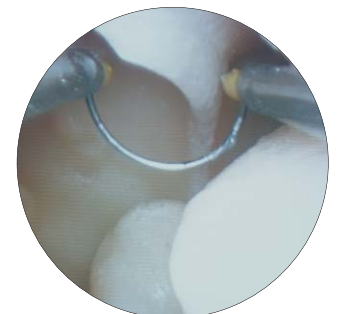
- 1 Resectable Uterus with Polyps, Fibroid and Septum **60321**
- 1 Resectable Uterus with Fibroid **60323**
- 1 Uterus Clamp **60334**
- 1 Universal Base Splash Shield **60329**
- 1 Universal Base **60325**
- 1 Universal Base Drainer **60327**

### Other information

- Store Resectable Uteri in a refrigerator
- Leave in original packaging at room temperature for 24 hours prior to use
- Must be used with a patient return electrode plate for monopolar usage
- Both water and saline solution can be used as resection fluid

### Note

Limbs & Things do not supply any endoscopic/laparoscopic electronics, devices, instruments or their consumables



*Endoscopic view of resectable uterus showing polyps and septum*



### Resectable Uterus with Fibroid

Part No: **60323** ⚡

### Resectable Uterus with Polyps, Fibroid & Septum

Part No: **60321** ⚡

### Universal Base Splash Shield

Part No: **60329**

### Universal Base

Part No: **60325**

### Universal Base Drainer

Part No: **60327**

### Uterus Clamp

Part No: **60334**

### Helix Connectors

Part No: **90100**

Products marked with ⚡ are resectable and, as when resecting human tissue, users must be provided with adequate protection to prevent the inhalation of fumes, such as extraction, personal respirators or similar.

# Setting up a Resectable Uterus

1. Release the Uterus Clamp by turning the black clips on the top of the Universal Base **fig 1**

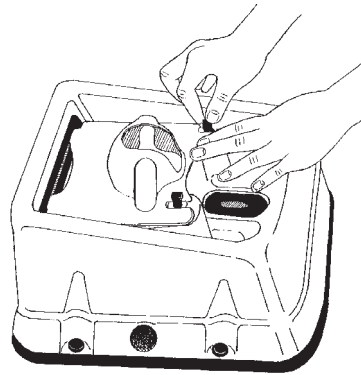


fig 1

2. Remove the Uterus Clamp by lifting it up at the front and sliding it out from the slot on the back of the base **fig 2**. Set the clamp to one side.

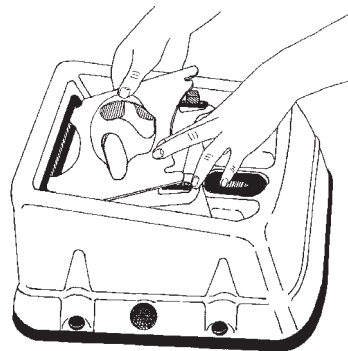


fig 2

3. Place the diathermy ground plate on the flat section of the base **fig 3**.

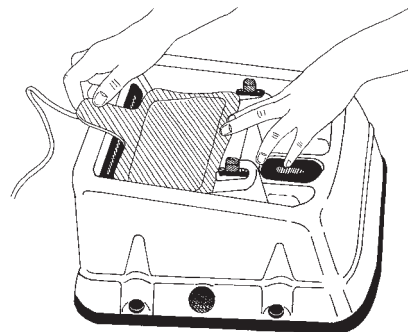


fig 3

4. Turn the Uterus Clamp upside down and push the uterus into the hollow. Ease the two extensions representing the fallopian tubes into the holes on either side of the clamp **fig 4a**.

Turn the Uterus Clamp back over, whilst supporting the uterus in position **fig 4b**.

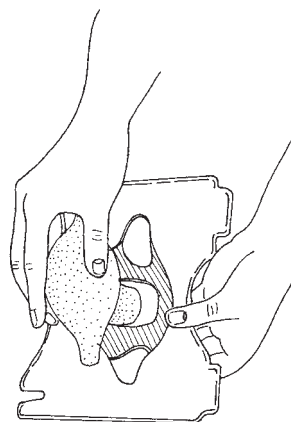


fig 4a

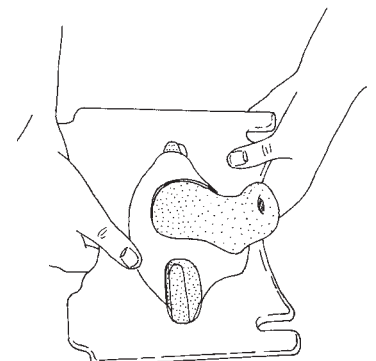
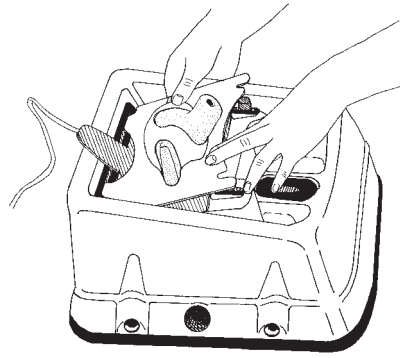


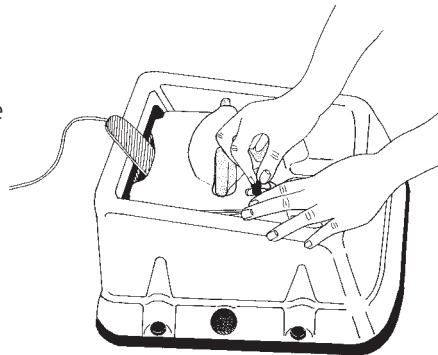
fig 4b

5. Slide the back of the clamp into the slot on the back of the base **fig 5**.



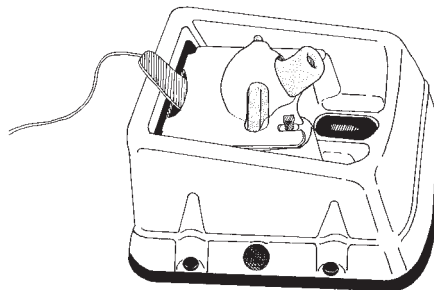
**fig 5**

6. Push down on the front of the clamp and turn the black clips to secure it in position **fig 6**.



**fig 6**

7. The resectable uterus in place **fig 7**.



**fig 7**

8. Attach the Splash Shield to the top of the Universal Base using the 4 helix connectors.

Attach the end of the drain hose, with the rubber fixing, to the underside of the Drainer. The white plastic weight push fits onto the other end of the hose.

Fit the base onto the Drainer and place the model on the work surface with the Drainer tray overhanging the edge of the work surface. The weighted end of the hose should be put into a container to collect irrigation fluid.

## Care of resectable products

- Keep away from excessive heat and sunlight. Store in a cool place, preferably a refrigerator.
- Do NOT store in a freezer.
- Do not allow to dry out - when not in use always keep in the airtight bag the product is supplied in.
- Do not ingest the product and practise normal hygiene after handling the products.

## Important note on irrigation

- For endoscopic procedures use a very slow drip for irrigation. Only a small amount of liquid is required for successful procedure, if recommended storage conditions are maintained.
- Do not position the Hysteroscopic Resection Trainer above electrical equipment.
- Check that the resection fluid is draining efficiently into the container. Remove any resection 'chips' from the mesh covering the drainage hole on the Universal Base. Resection 'chips' can build up causing the hole to block and fluid to overflow from the base.

